

PRODUCT DATA SHEET

MEDUSA ANTIQUING COLOR STAIN



Medusa Antiquing Color Stain is a liquid form, semi-transparent, water based penetrating concrete stain. Medusa Antiquing Color Stain uses the concrete porosity and natural desire to take in moisture and allows it to pull in the unique micronized pigments to transform boring, lifeless concrete into a multi-colored, antiqued, variegated surface.

When you choose any one of the twenty-nine colors, you are in control of its movement and beauty with its eco-friendly, zero VOC, no rinsing, no neutralizing formula.

APPLICATIONS

Medusa Antiquing Color Stain has an infinite number of applications, but is most commonly used for:

- Concrete and Concrete Overlays
- Floors, walls, ceilings, countertops, wall panels and other architectural elements in residential and commercial settings.

BENEFITS

Medusa Antiquing Color Stain has a large list of benefits, including but not limited to:

- Uses natural concrete porosity
- Creates unique surfaces
- 29 colors to chose from
- Eco-friendly

PACKAGING

- 4 oz. (118mL) bottle
- 32 oz. (947 mL) concrete bottle
- 128 oz. (3.8 L) concrete jug

COVERAGE

200 ft.² at "standard strength" (18.6 m²) per gallon (3.8 L)

APPLICATION TEMPERATURE

Surface and ambient temperatures must consistently range between 50°F (10°C) - 90°F (32°C) for 24 hours.

ODOR

N/A

CURE TIME

14–28 days, or once concrete is fully cured.

SHELF LIFE

Under normal conditions: when kept dry and moisture free, out of direct sunlight, the shelf life of an unopened container is (12) months from the date of purchase. Storage must be under roof and off the floor. Rotate inventory to maintain product that is within limits.

MIXING RATIO

See specific instructions below.

SURFACE PREPARATION

1. **Clean** - The surface must be free of dust, dirt, oil, grease, paints, glues, sealers, curing agents, stamp tool releases, efflorescence, chemical contaminants, rust, algae, mildew and other foreign matter that may prevent proper adhesion. Customarily SCR is appropriate for cleaning. Refer to the TDS for SCR. Some cleaning may require other measures that should be evaluated (e.g. grinding, shot blasting).
2. **Cured** - Antiquing Color Stain is best used on cured concrete and cured concrete overlays. One may apply Antiquing Color Stain on not fully cured concrete, final color may not be realized until 14–28 days, or once concrete is fully cured.
3. **Sound** - No system should be placed on concrete or overlays that are flaking or spalling.
4. **Profiled** - Concrete Renovator is utilized on every project to properly clean and profile concrete and cement based overlays. On surfaces mechanically abraded, Concrete Renovator is still recommended.

NOTE: Some substrates are excessively porous. Concrete and cement based overlays that were finished poorly [not closed with a steel trowel], broomed, or are very old may absorb Eco-Stain so deeply that little color, if any, is visible. On these projects the use of Eco-Prime is required.

TEMPERATURE / CURE

As Medusa Antiquing Color Stain must be sealed, temperature and cure are addressed according to the selected sealer's requirements. Typically apply when surface and ambient temperatures range between 50°F (10°C) and 90°F (32°C) and will remain that way for 24 hours.

MIXING / APPLICATION

Medusa Antiquing Color Stain comes in (3) different sizes, each designed to match the color chart. The

color chart is based on two-applications of the Color Stain at "standard strength". Identify which of the three sizes of Medusa Antiquing Color Stain you have and follow the mixing instructions for that exact size to ensure you are at "standard strength".

32 oz. Concentrate

Designed to be mixed with water in order to match the color chart. Thoroughly shake the bottle to evenly dispense pigment for 10-15 seconds. Pour the Color Stain in to a 1 gallon mixing container (or larger) and add 96 ounces of clean water (3 quarts), and then mix for 10-15 seconds. At this point, you have created 1-gallon of "standard strength" Color Stain. Medusa Antiquing Color Stain can be diluted, if desired, to create a new shade not on the color chart. This dilution can vary from "standard strength" to approximately 4 parts water to 1 part Color Stain (4:1).

128 oz. Concentrate

Designed to be mixed with water in order to match the color chart. Thoroughly shake the bottle to evenly dispense pigment for 10-15 seconds. Pour the Color Stain in to a 5-gallon mixing container (or larger) and add 512 ounces (4 gallons) of clean water, and then mechanically mix for 1-2 minutes.

At this point, you have created 5-gallons of "standard strength" Color Stain. Medusa Antiquing Color Stain can be diluted, if desired, to create a new shade not on the color chart. This dilution can vary from "standard strength" to approximately 4 parts water to 1 part Color Stain (4:1).

4 oz.

Medusa Antiquing Color Stain is "standard strength". To match color chart no dilution is required. Medusa Antiquing Color Stain can be diluted, if desired, to create a new shade not on the color chart. This dilution can vary from "standard strength" to approximately 4 parts water to 1 part Color Stain (4:1).

SLIP RESISTANCE

Medusa Antiquing Color Stain alone does not affect slip resistance, but the sealer selected to finish the project will influence this matter.

CLEAN UP

Before the product dries, spills and tools can be cleaned up with water.

DISPOSAL

Contact your local government household hazardous waste coordinator for information on disposal of unused product.

LIMITATIONS

Raw material supply for the specialized pigments may vary by batch. For use by trained professionals that have read the complete SDS.

CAUTIONS

KEEP OUT OF REACH OF CHILDREN.

FURTHER INFORMATION

Information relating to the safe handling of this product can be found in the Material Safety Data Sheet.

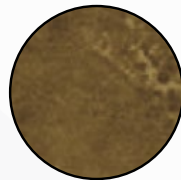
COLOR



NAVY BLUE



MAGNET



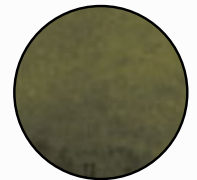
KODIAK



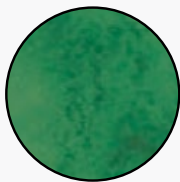
KAYAK



HARVEST YELLOW



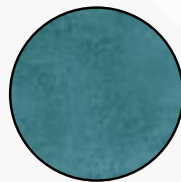
GREEN OLIVE



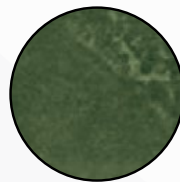
FIR GREEN



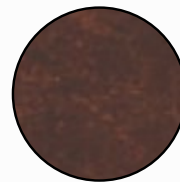
ESPRESSO



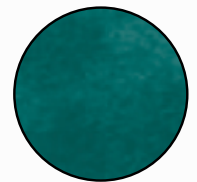
EPIC BLUE



COOL FOREST



BURNT CRIMSON



BERMUDA BLUE



BEECHNUT



AZTEC GOLD



AUTUMN GOLD



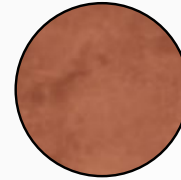
ARBOR GREEN



DOMINO



MIDNIGHT



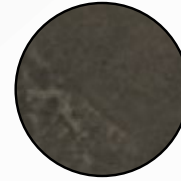
TERRA COTTA



WHITE



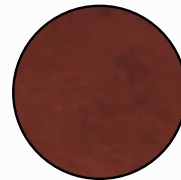
WALNUT



TITANIUM



THAI GREEN



SPANISH RED



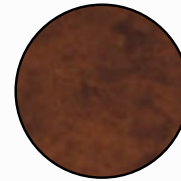
SAFARI TAN



RUBY



PEWTER



OAK



ORANGE BLOSSOM